

# Harbor Small Cap Value Fund



Investor Class: HISVX

## Annual Shareholder Report

October 31, 2024

This annual shareholder report contains important information about Harbor Small Cap Value Fund ("Fund") for the period of November 1, 2023 to October 31, 2024. You can find additional information about the Fund at [www.harborcapital.com/documents/fund](http://www.harborcapital.com/documents/fund). You can also request this information by contacting us at 800-422-1050.

### What were the Fund costs for the last year?

(based on a hypothetical \$10,000 investment)

Class Name	Costs of a \$10,000 investment	Costs paid as a percentage of a \$10,000 investment
Investor Class	\$141	1.24%

### Management's Discussion of Fund Performance

Subadvisor: EARNEST Partners LLC

#### Performance Summary

The Investor Class returned 27.40% for the year ended October 31, 2024, while the Russell 2000® Value Index returned 31.77% during the same period.

Top contributors to relative performance included:

- Security selection within Industrials and Information Technology.
- Positions in FirstCash Holdings, Inc., Advanced Energy Industries, Inc., and Cabot Corp. FirstCash Holdings, Inc. reported strong revenue growth, driven by expansion in Latin America and e-commerce enhancements, while Advanced Energy Industries, Inc. capitalized on demand in the semiconductor industry. Cabot Corp. benefited from increased demand in automotive and construction markets, contributing to a year-over-year earnings increase.

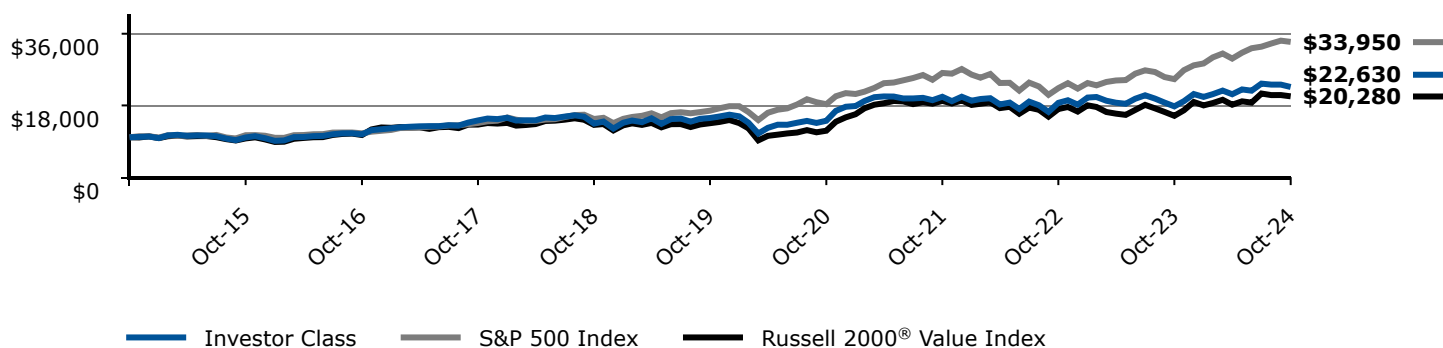
Top detractors from relative performance included:

- Underweights within Communication Services and Real Estate.
- Positions in Diodes Inc. and Albany International Corp., which were impacted by rising raw material costs and supply chain disruptions.

**Keep in mind that the Fund's past performance shown is not a good predictor of how the Fund will perform in the future. The graph and table do not reflect the deduction of taxes that a shareholder would pay on Fund distributions or redemption of Fund shares.**

### Change in a \$10,000 Investment

For the period 11/01/2014 through 10/31/2024



The graph compares a \$10,000 initial investment in the Investor Class with the performance of the S&P 500 Index and Russell 2000® Value Index. The Investor Class performance assumes the reinvestment of all dividend and capital gain distributions.

## Average Annual Total Returns

	1 Year	5 Years	10 Years
<b>Investor Class</b>	27.40%	8.81%	8.51%
<b>S&amp;P 500 Index</b>	38.02%	15.27%	13.00%
<b>Russell 2000® Value Index</b>	31.77%	8.42%	7.33%

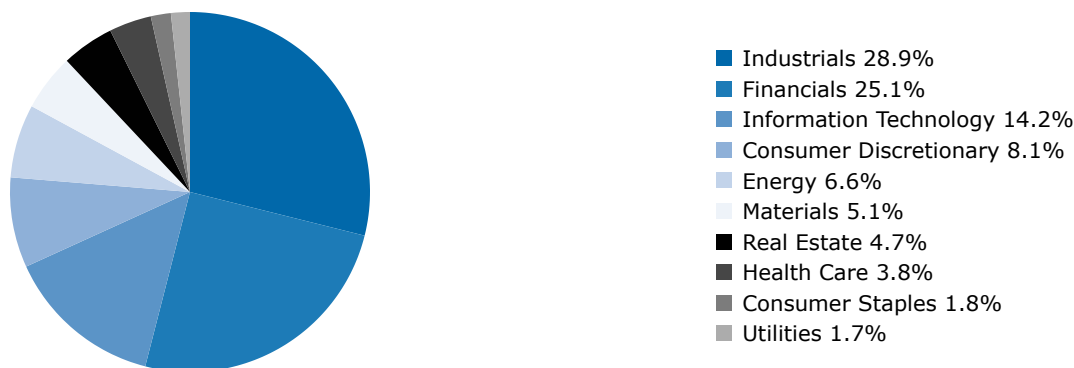
Current performance may differ from returns shown. The most recent month end performance is available under products at [www.harborcapital.com](http://www.harborcapital.com) or by calling 800-422-1050.

## Key Fund Statistics

<b>Total Net Assets (in thousands)</b>	\$2,422,196
<b>Number of Investments</b>	57
<b>Total Net Advisory Fees Paid (in thousands)</b>	\$17,294
<b>Portfolio Turnover Rate</b>	21%

## Fund Investments

### Sector Allocation (% of Investments)



## Availability of Additional Information

Additional information about the Fund, including but not limited to the Fund's financial statements, prospectus, schedule of holdings or proxy voting information can be accessed by visiting [www.harborcapital.com/documents/fund](http://www.harborcapital.com/documents/fund), by scanning the QR code, or by contacting us at 800-422-1050. For proxy voting information, visit [www.harborcapital.com/proxy-voting](http://www.harborcapital.com/proxy-voting).



## Householding

The Fund has adopted a policy that allows it to send only one copy of a Fund's prospectus, proxy materials, annual report and semi-annual report to certain shareholders residing at the same household. This reduces Fund expenses, which benefits you and other shareholders. If you need additional copies or do not want your mailings to be "household," please call the Shareholder Servicing Agent at 800-422-1050. Individual copies will be sent within thirty (30) days after the Shareholder Servicing Agent receives your instructions. Your consent to householding is considered valid until revoked.

All trademarks or product names mentioned herein are the property of their respective owners. Copyright © 2024 Harbor Capital Advisors, Inc. All rights reserved.